

# Simply Touch – Installation Manual

Version 1.0

---

Prepared by: Julie Sassine (jsassine@simplysoftware.com.au)

## ABSTRACT

The Simply Touch Installation Manual provides step by step instructions on how to install Simply Touch on your Windows Based Computer.

Version	Author(s)	Changes
1.0	JS	Initial draft.

## Table of Contents

<b>1.</b>	<b>Installing Simply Touch .....</b>	<b>3</b>
1.0	Installing .....	3
1.1	Setting up.....	8
1.2	Troubleshooting your installation.....	11
<b>2</b>	<b>Support .....</b>	<b>11</b>
1.1	Frequently Asked Questions.....	11
1.2	Contact Simply Software Technical Support Team .....	11

# 1. Installing Simply Touch

1. Before you start, close all open applications. This is very important for correct installation.
2. Log in as an Administrator (for Windows 7 or Windows Vista users), or as an Administrator or Power User (for Windows XP users whose computers only allow people with administrator privileges to install programs).

*NOTE: Logging into Windows 7 or Windows Vista as a Standard user. If you have the Administrator password, you may be able to log into Windows 7 or Windows Vista as a Standard user. You can then install Simply Touch.*

## **- If you have received an Installation CD, follow these steps:**

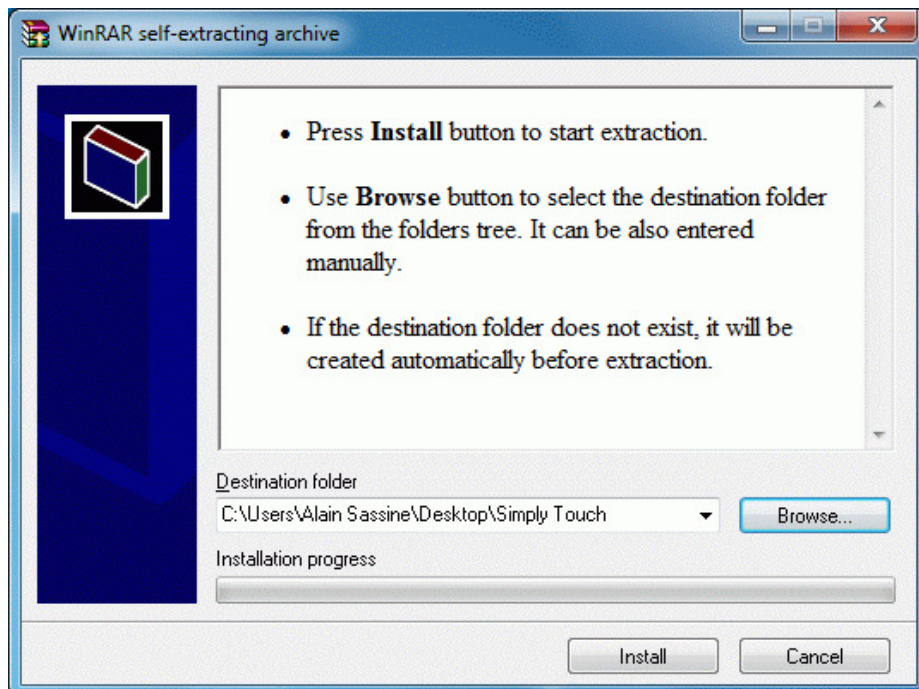
3. Insert the Simply Touch CD and wait a few moments. A welcome window appears. If a welcome window does not appear automatically:

Windows 7 or Windows Vista	1 Go to the Start menu and click My Computer. 2 Click your CD or DVD drive icon (usually labelled D:\ or E:\) in the right pane of the Computer window.
Windows XP	1 Go to the Desktop and double-click My Computer. 2 Double-click your CD or DVD drive icon (usually labelled D:\ or E:\) in the right pane of the Computer window.

The welcome window appears. If the welcome window still does not appear, double-click the **setup.exe**

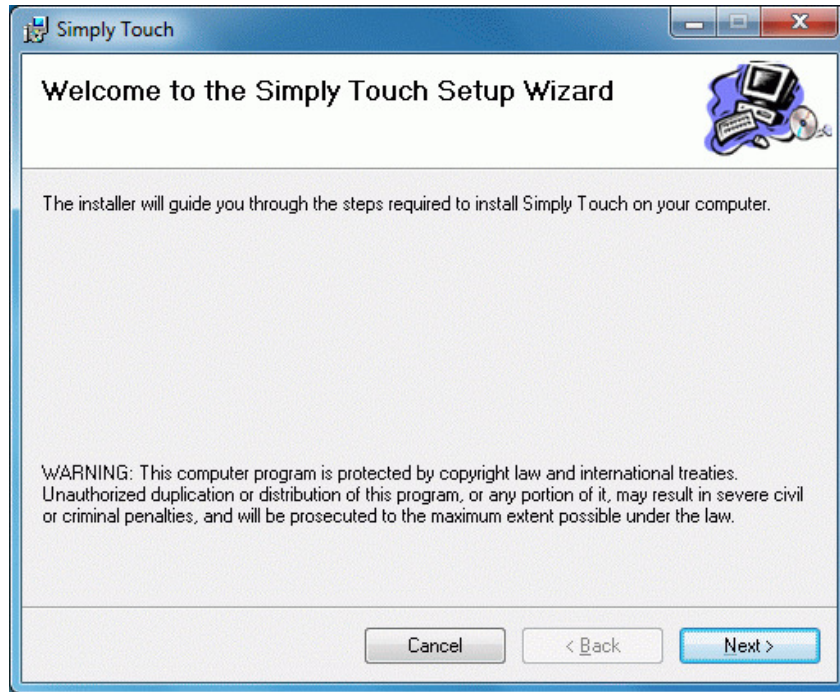
## **- If you have downloaded Simply Touch from our website, follow these steps:**

3. Click the downloaded file labelled: **simplyTouch\_Trial.exe**.

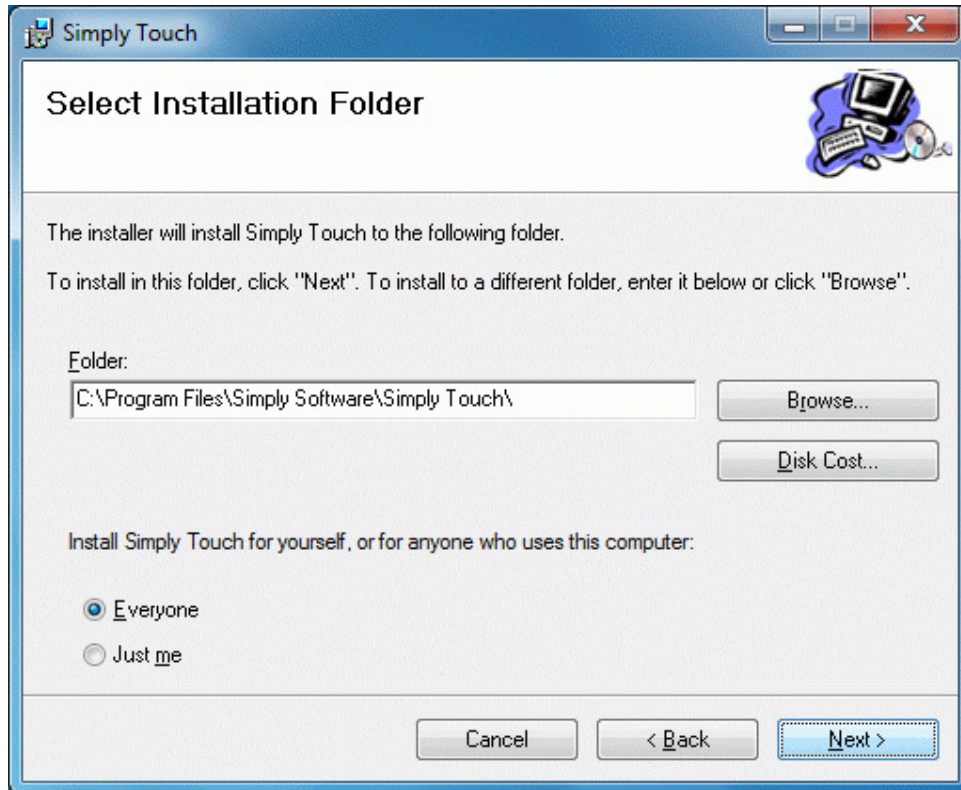


4. Select a folder to extract files to by clicking browse (then selecting folder)

5. Click Install, the “welcome to Setup Wizard” screen appears will appear:

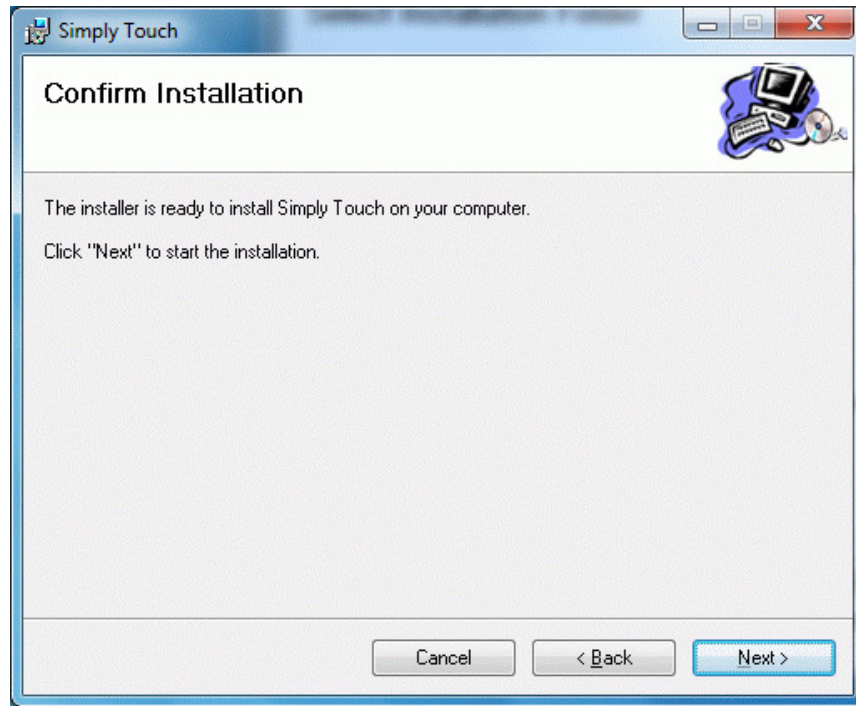


6. Click next; the “Select Installation Folder” windows will appear:

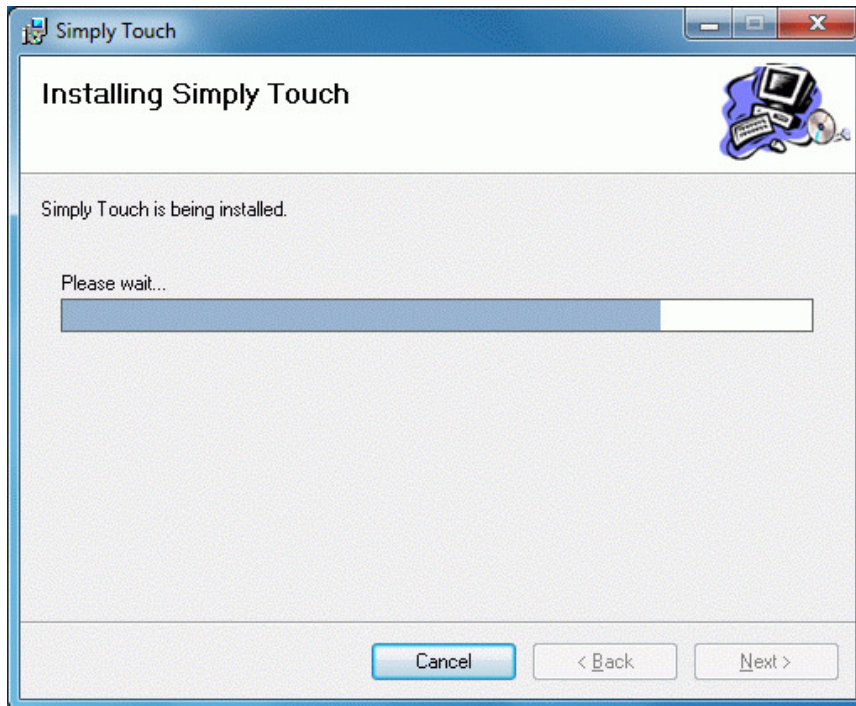


**NOTE:** Warnings: Do not change the default directory C:/Program Files for installation

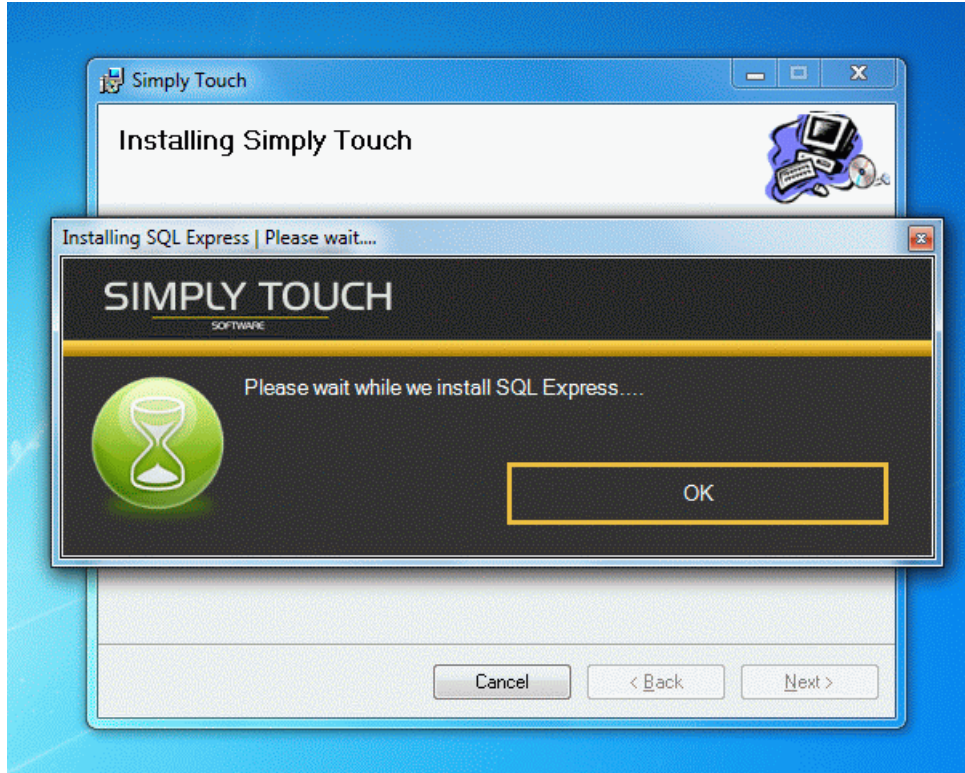
7. Click next; the “Confirm Installation” window will appear:



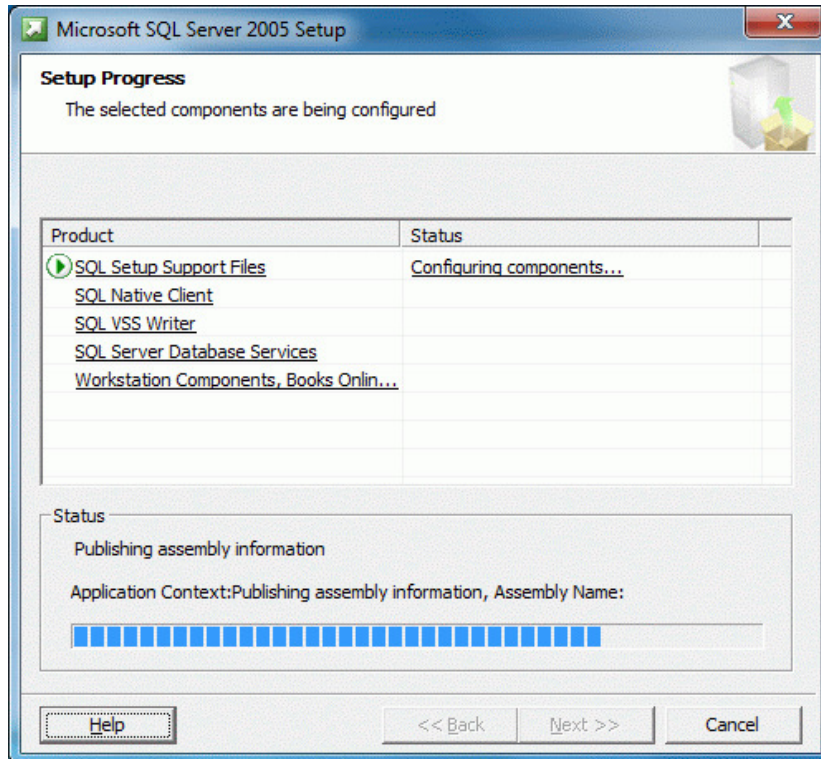
8. Click next. Simply Touch will start the installation process:



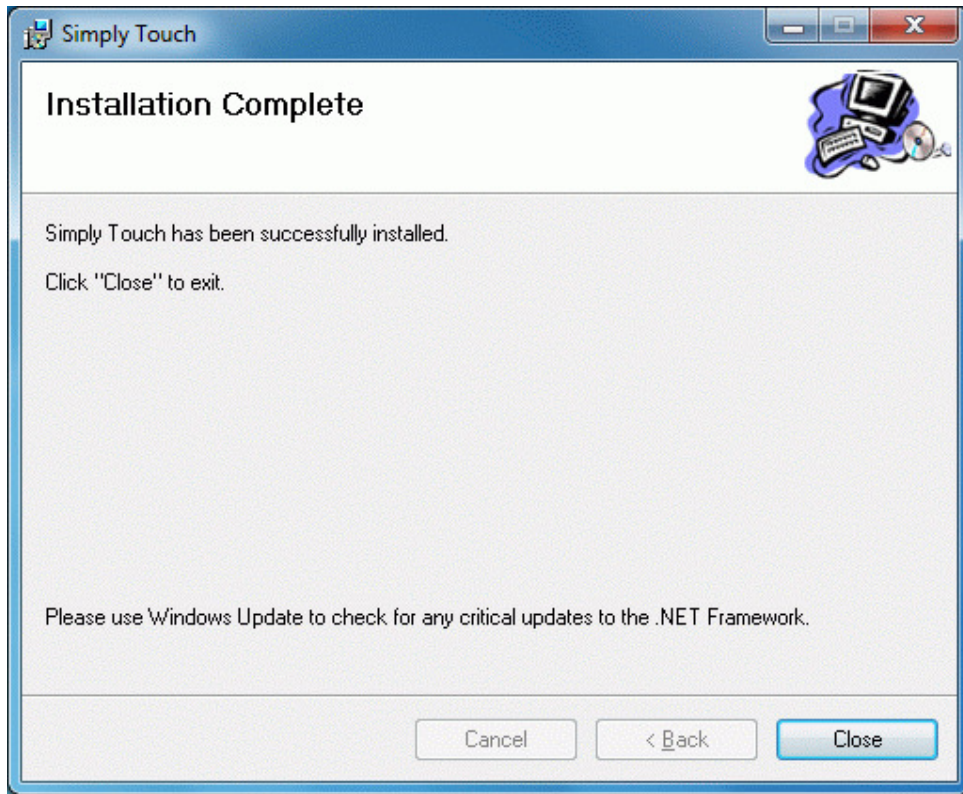
9. After a few moments, Simply Touch will try and install Microsoft SQL Express. This process might take a few minutes depending on your Computer Specification.



**NOTE:** Sit back and wait for installation to finish. This step doesn't require any end user action.



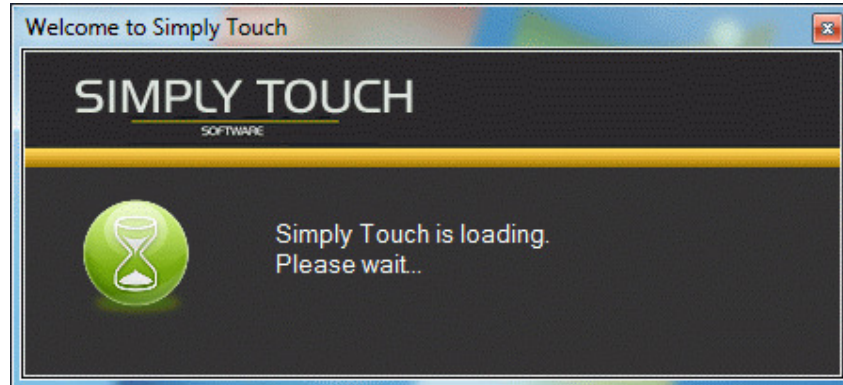
10. Once SQL Express finishes installation, the "Installation Complete" window will appear:



## 1.1 Setting up

Setting up involves tasks which you need to perform to get your Simply Touch software up and running and customised to suit your needs. As your business changes, you can change how your Simply Touch software works.

1. Go to your Computer Desktop, double click icon: **Simply Touch** to launch the software:

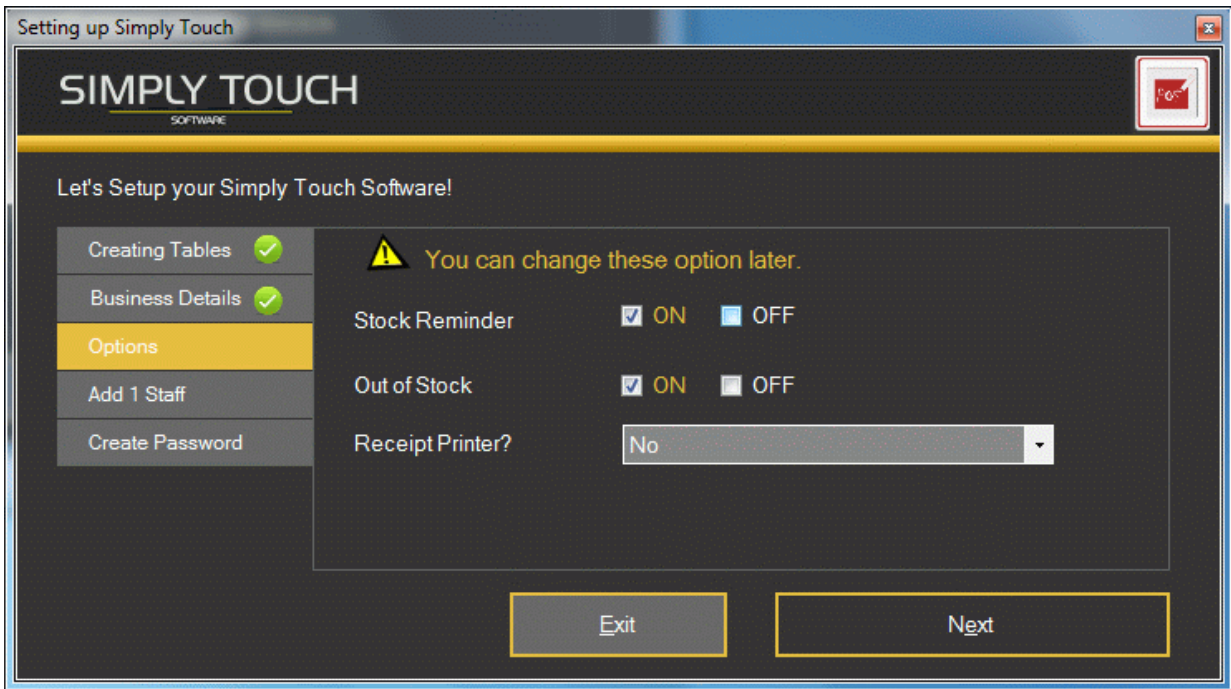


2. Wait a few minutes, and then enter:

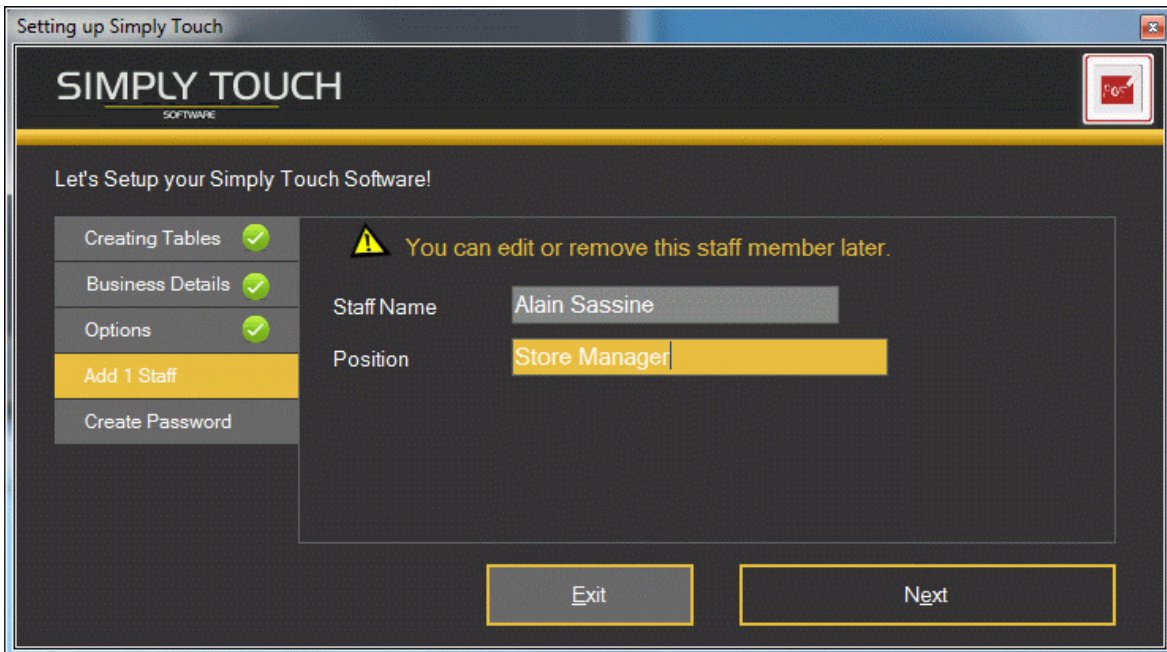
- Your business name (as it will appear on your invoices/receipts)
- Your ABN
- Your address
- Your store phone number

3. Click next and then select if you want to be notified when you're **running out of stock** and when you're **running low** on stock.

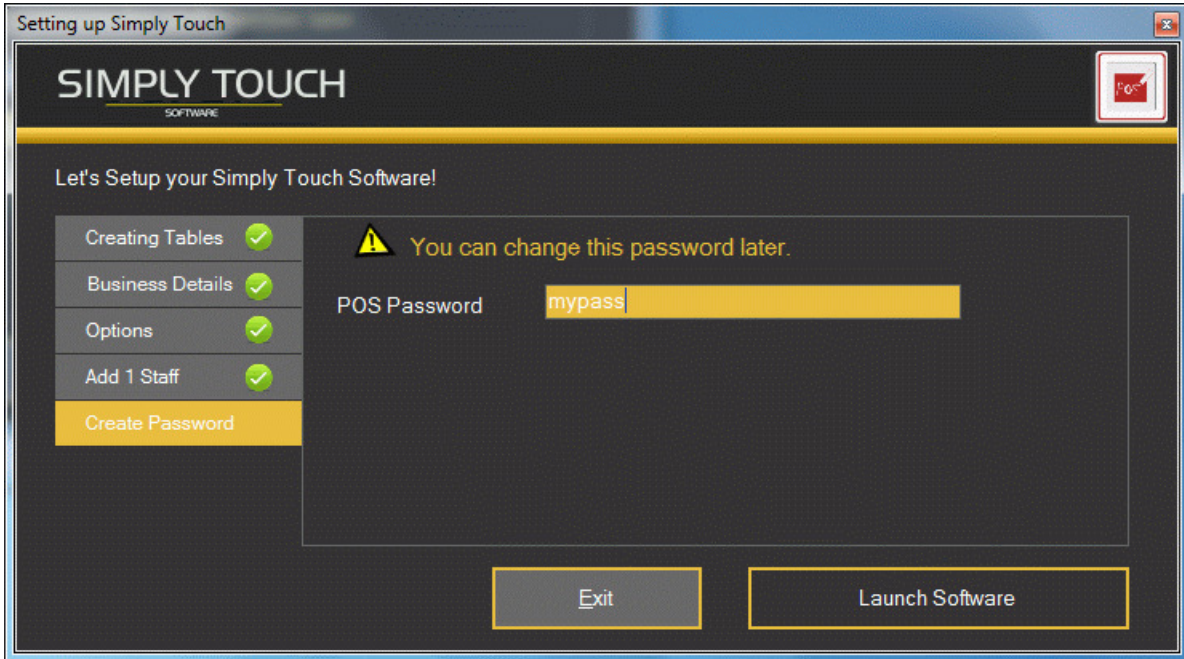
If you're using a Receipt Printer, please select YES from the drop down menu.



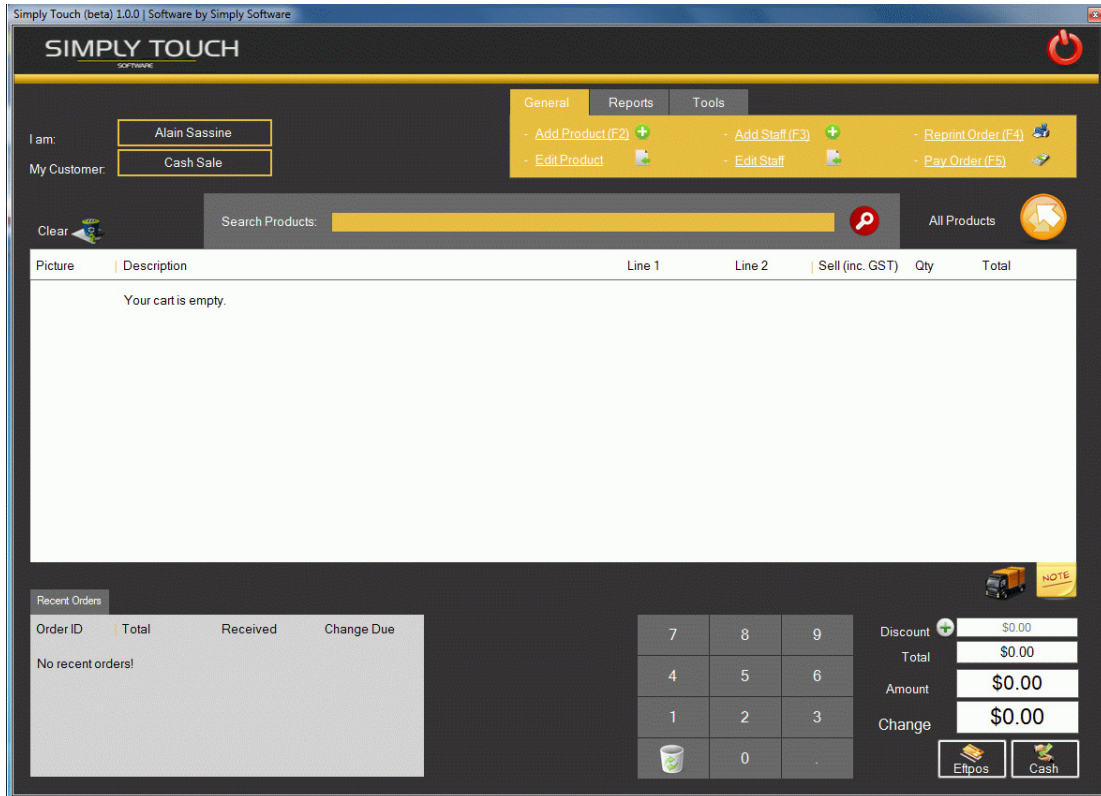
4. Click next and then enter the Administrator Name (staff name) and Position within the store.



5. Click next and enter you Administrator password. You will need this password if you have non-admin staff registered in Simply Touch.



6. Click "Launch Software" and enjoy.



## 1.2 Troubleshooting your installation

A number of warning messages may appear during the installation of Simply Touch:

Adjust your screen resolution.	You may ignore this message or set your Windows Desktop screen size to a standard size.
A reboot is required to complete installation	You must reboot the system.

For help resolving other installation issues, contact the Simply Software technical support team on [0438 033332](tel:0438033332).

## 2 Support

### 2.1 Frequently Asked Questions

Q. [Do I need Internet to install Simply Touch?](#)

A. No. Simply Touch doesn't require Internet Connection after you've downloaded Simply Touch.

Q. [Can I install Simply Touch on a \*\*MAC\*\*?](#)

A. Yes. You need to install Boot Camp (<http://www.apple.com/macosx/bootcamp/>) on your MAC.

Q. [Can I change my store name details; password etc after installation is complete?](#)

A. Yes, these details are in the "Options" and "Invoice" section of Simply Touch

### 2.2 Contact Simply Software Technical Support Team

Contact Simply Software: <a href="tel:0438033332">0438 033 332</a>	9.00am to 7.00pm (Monday to Wednesday) 9.00am to 9.00pm (Thursday & Friday)
---	--